

MONTHLY MEMBERSHIP PROGRESS REPORT

LOCATION IOWA

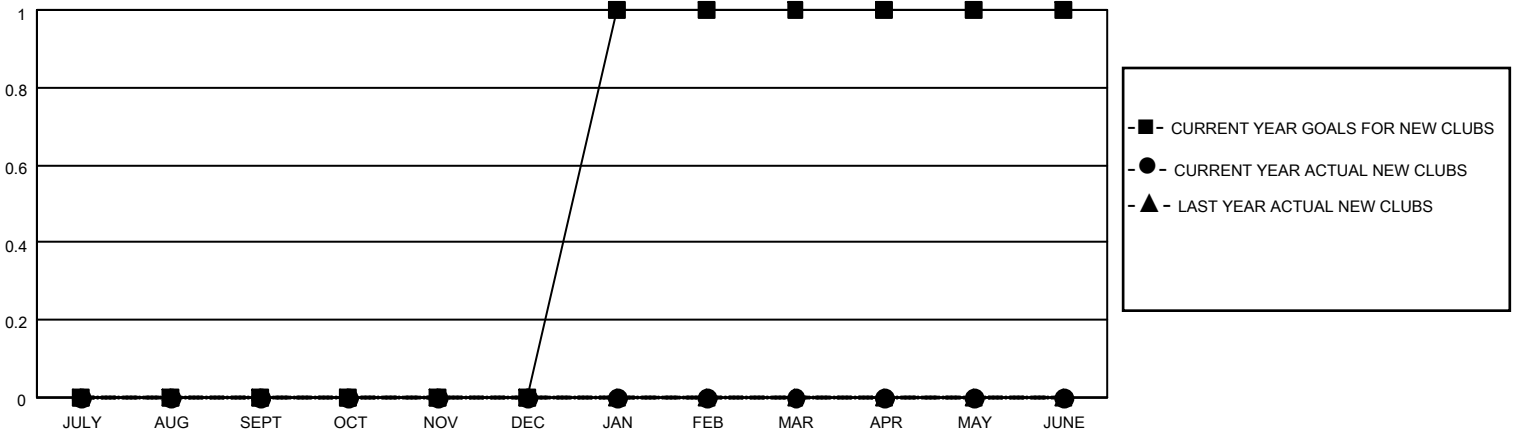
District 9 SE

Results as of: 7/31/2021

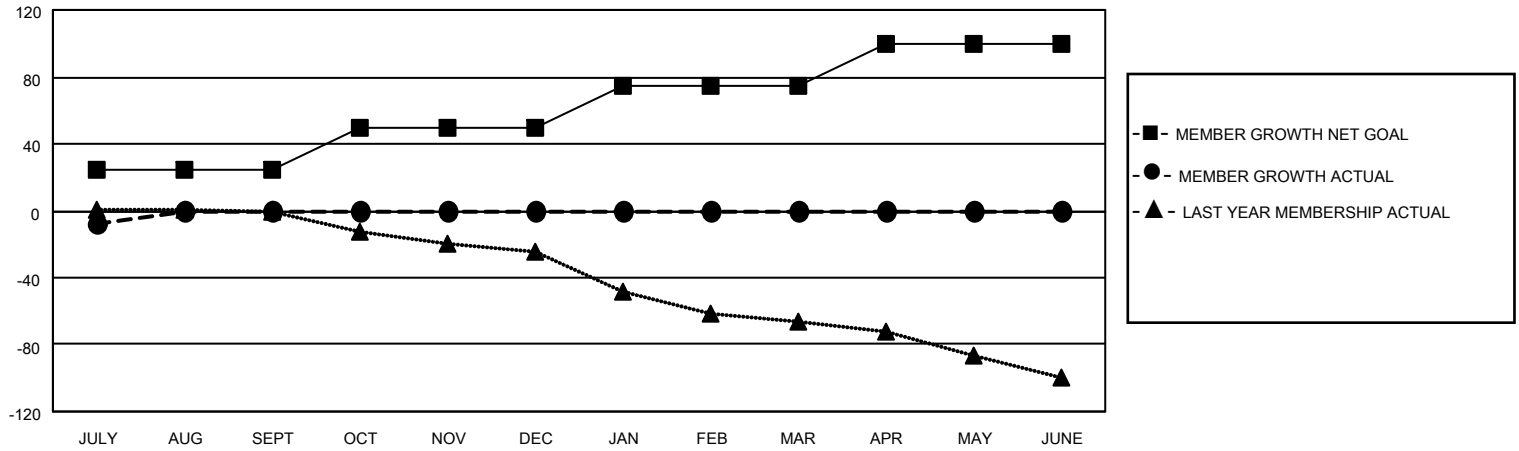
| Clubs | | | |
|-----------------------|---------------|-----------|---------------|
| RESULTS FOR 2021-2022 | | | |
| QUARTER | NEW CLUB GOAL | NEW CLUBS | DROPPED CLUBS |
| JULY/AUG/SEPT | 0 | 0 | 0 |
| OCT/NOV/DEC | 0 | 0 | 0 |
| JAN/FEB/MAR | 1 | 0 | 0 |
| APR/MAY/JUNE | 0 | 0 | 0 |

| Members | | | |
|-----------------------|------------------------|----------------------|---|
| RESULTS FOR 2021-2022 | | | |
| QUARTER | MEMBER GROWTH NET GOAL | MEMBER GROWTH ACTUAL | DROPPED MEMBERS ACTUAL (including transfers) |
| JULY/AUG/SEPT | 25 | 5 | 10 |
| OCT/NOV/DEC | 25 | 0 | 0 |
| JAN/FEB/MAR | 25 | 0 | 0 |
| APR/MAY/JUNE | 25 | 0 | 0 |

GOALS AND ACTUAL NEW CLUBS CUMULATIVE



GOALS AND ACTUAL MEMBERS CUMULATIVE



| | | |
|---|---|--|
| DROPPED CLUBS: 0 | 2 CLUBS OF 46 ADDED 1 OR MORE NEW MEMBERS | <u>GENDER DISTRIBUTION</u> MALE 621 (67.43%) FEMALE 300 (32.57%) |
| <u>DROPPED MEMBERS</u> DECEASED 4 CLUB CANCELLED 0 OTHER 6 <hr/> TOTAL 10 | CLICK HERE FOR CUMULATIVE MEMBERSHIP DATA | TOTAL FAMILY UNIT MEMBERS 194 FAMILY MEMBERS PAYING HALF DUES 98 |